



# Instruction Manual

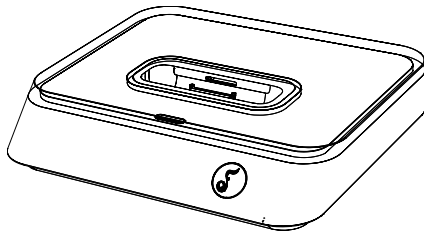
FS-23

# Introduction

The iPort® FS-23 allows you to control a compatible iPod® or iPod touch® by using an on-TV visual menu system. From any connected TV in your house, you can play music, videos, and full-length movies stored on your iPod, transforming it from a personal listening device to a whole-house media source.

You can place the iPort on a desk, table, or other convenient location — allowing quick and easy docking of an iPod — and connect it to your audio/video system, your computer, or directly to your TV.

Before installing and using the iPort, please read and follow all of the instructions in this manual carefully.



## iPort FS-23 Box Contents

Your FS-23 box should contain the following items:

- (1) iPort dock
- (1) iPort SR-1 remote control
- (1) Audio cable (3.5mm 3-pin stereo to 2-RCA, 2 meters)
- (1) Component video cable (3.5mm 4-pin to 3-RCA, 2 meters)
- (1) 12V DC regulated global power supply with international plugs
- (1) *Instruction Manual*

## FS-23 System Capabilities

- Allows the iPod to be controlled using a visual menu system on any connected TV
- Delivers unbalanced audio and component video from the iPod
- Allows the iPod to be line-of-sight IR-controlled and remotely IR-controlled (Remote IR control requires a compatible third-party controller, optional remote zone IR cable, and receiver. Contact your dealer for these items.)
- Charges the iPod while it is docked
- Supports iPort firmware upgrades

## iPod Models Supported

The iPort FS-23 is compatible with most dockable iPod models, including iPod nano (5<sup>th</sup> generation), iPod classic, and iPod touch (2<sup>nd</sup> generation). For current compatibility information, visit [iportmusic.com](http://iportmusic.com).

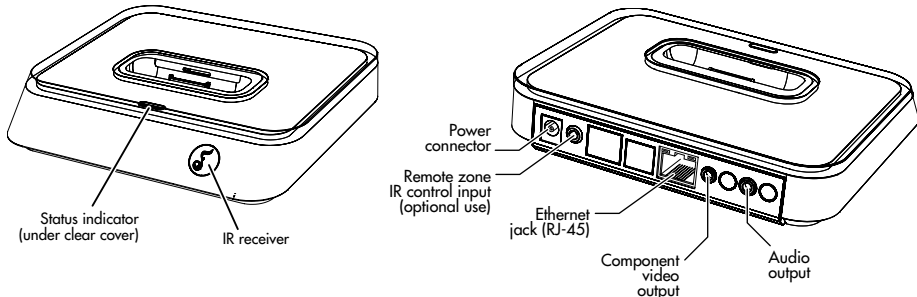
## Selecting a Location for the iPort Dock

The iPort FS-23 is designed for use in normal interior environments. When selecting a location for the system, please consider the following:

- Do not use the iPort outside or in a humid or wet environment. The iPort is not waterproof, nor is it water-resistant.
- Avoid placing the iPort dock in direct sunlight, which can interfere with IR signals.

# iPort Connections and Controls

FIGURE 1: IPORT CONNECTIONS AND CONTROLS



**STATUS INDICATOR:** Whenever an iPod is docked, the status indicator glows white.

**IR RECEIVER:** Receives line-of-sight IR signals from the remote control.

**POWER CONNECTOR:** Connects to the supplied 12V DC power supply.

**REMOTE ZONE IR CONTROL INPUT (OPTIONAL USE, CABLE NOT INCLUDED):** 3.5mm mono jack connects to a compatible IR control system using an optional 3.5mm-to-3.5mm cable. This can be used instead of placing an IR emitter on the iPort's function selector/IR receiver.

**ETHERNET PORT:** Connect to your home network using an Ethernet cable (not included) that is connected to a hub, switch, or direct connection with a computer. This enables your iPod to sync with your computer using iPortNetSync software (downloadable from [iportmusic.com](http://iportmusic.com)).

**COMPONENT VIDEO OUTPUT:** Has three RCA plugs for connecting to component video inputs of a TV or AV component. The 3.5mm video cable connects to the iPort's Component video output.

**AUDIO OUTPUT:** Has L/R RCA plugs for connecting to any analog audio processor (such as a TV or AV receiver). The 3.5mm audio cable connects to the iPort's Audio output.

# iPort FS-23 System Connections

The iPort FS-23's unbalanced audio and video outputs are designed for use in a local-zone system where the audio/video equipment is located less than 30 feet (9m) from the iPort. For longer distances, the iPort Balanced Audio Kit (part #70122, not included) and Balanced Video Kit (part #70123, not included) are available. The Balanced Audio Kit allows the iPort to connect to audio equipment located up to 500 feet (152m) away. The Balanced Video Kit allows the iPort to connect to video equipment located up to 250 feet (76m) away. For further information about connecting the iPort FS-23 to a long-distance audio/video system, see the instruction manuals included with the Balanced Audio and Balanced Video kits.

## Connecting the iPort FS-23 to a Local-Zone Audio/Video System

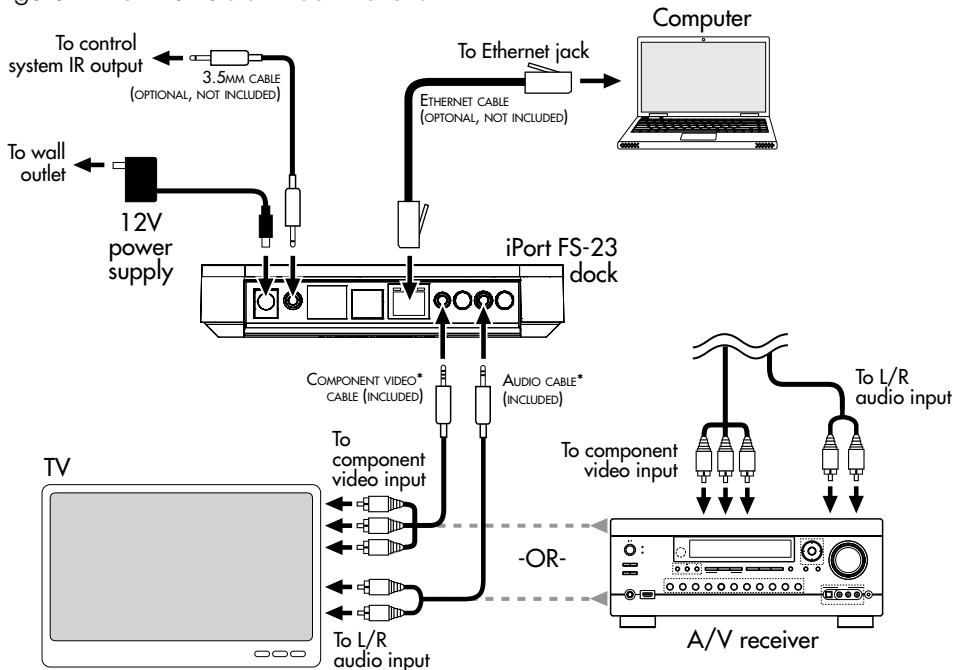
1. Connect the iPort FS-23 dock to the audio/video and computer components as shown in the diagram in Figure 2 on page 6:
2. Connect the included audio cable to the iPort's AUDIO OUTPUT jack and to an analog audio source input on the audio system or TV.
3. Connect the included component video cable to the iPort's COMPONENT VIDEO OUTPUT jack and to the component video inputs of the audio system or TV.
4. Connect an Ethernet cable (not included) to the iPort's RJ-45 Ethernet port and to a computer, switch, or hub on your home network. (optional)
5. Connect the supplied 12V DC power supply to the iPort's power connector.
6. After confirming that all cables are connected correctly, plug the power supply into a wall outlet. The iPort's Main Menu appears on the TV.

For remote zone IR control:

1. Connect an optional 3.5mm-to-3.5mm cable to the iPort's IR CONTROL INPUT and to the IR control output of a compatible third-party IR control system (optional; for multi-room systems only).

# Docking and Undocking an iPod

Figure 2: iPort FS-23 SYSTEM CONNECTIONS



\* THE AUDIO AND VIDEO CABLES CAN BE CONNECTED TO THE TV'S AUDIO AND VIDEO INPUTS INSTEAD OF A SEPARATE AUDIO SYSTEM.

## Docking Your iPod

The iPort includes a full-size dock adapter, which snaps into and out of the docking well. This adapter allows you to dock full-size iPods and provides proper back support for them. For use with smaller iPods, we recommend that you insert the dock adapter that was included with your iPod. Additional adapters are available only from Apple® and are not supplied by iPort.

1. Insert the dock adapter that was included with your iPod all the way into the iPort docking well (see Figure 3). After it is docked, the dock adapter can remain in the iPort docking well.
2. To dock the iPod, gently slide it down into the iPort docking well, as shown in Figure 4. Do not force the iPod down into the dock, as you may damage the multi-pin connector in the iPort base.

Figure 3: INSERTING THE IPOD  
DOCK ADAPTER

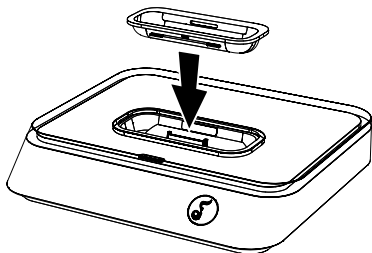
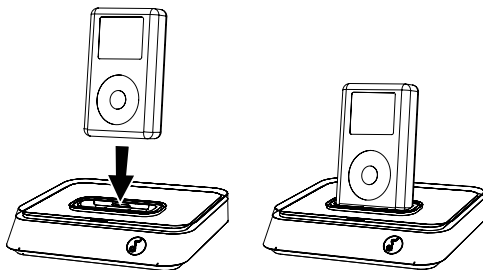


Figure 4: INSERTING THE IPOD



**Note:** The iPort's menu appears on the connected TV. If no video source is detected by your TV, check the cable connections. If the connections are secure, the problem may be video format.

- **NTSC:** Used in North, Central, and South America (except Brazil and Argentina), the Philippines, and Japan.
  - **PAL:** Used in Europe (except France), the Middle East, South and Southeast Asia, China, Australia, Brazil, Argentina, and most of Africa.
3. If you need to change the video format of your TV to match the iPort's output, refer to the TV's user manual for instructions.

- If you need to change the video format of your iPort to match your TV, un-dock the iPod, then press and hold the ◀◀ or ▶▶ button on the remote control for five seconds. The iPort's video format will change, then you can re-dock the iPod to try again.

## Controlling the Docked iPod

The iPort FS-23 allows your iPod to be controlled using:

- The iPort remote control (using a connected TV)
- An optional Apple remote or a third-party programmable/learning remote

## Controlling the iPod Using the iPort's Remote Control

1. Insert your iPod into the iPort dock. The Main Menu (Figure 5) opens on your TV.

If you don't see the menu, try changing your TV's video source.

2. Point the remote control directly at the iPort dock, then use the controls as shown in Figure 6 to complete this procedure.

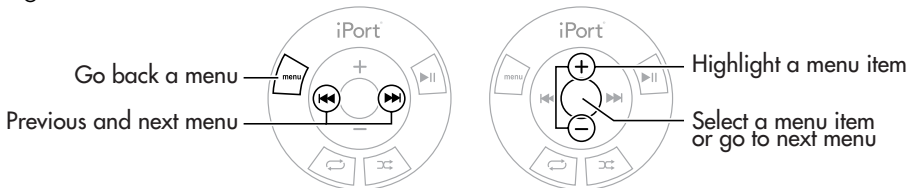
Your iPort remote control can now control the iPod using on-screen navigation.

**Tip:** You can also use an Apple remote control to use the iPort's menu system.

Figure 5: MAIN MENU



Figure 6: MENU CONTROLS



## Viewing photos from an iPod

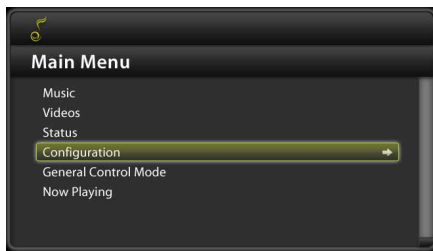
Viewing an iPod's stored photos on a connected TV requires the iPod to be in General mode. General mode lets you control the iPod directly using its scroll wheel or touch screen (iPod touch).

1. To control the iPod directly using the iPod's controls, from the iPort's MAIN MENU, select GENERAL CONTROL MODE.
2. Press SELECT on the remote control to close the message window.
3. Use the iPod's controls to select photos to view. Photos from the docked iPod now display on the TV.
3. To return to the iPort's TV menu, press and hold MENU for at least three seconds.

# Playing Music or Video

1. Press Menu on the remote control to open the iPort's Main Menu.

Figure 7: MAIN MENU



2. Highlight MUSIC to play music, or highlight VIDEO to play video, then press SELECT (remote control's center button). The menu displays the same information that is shown on the iPod display when listening to music or watching video. (See Figures 8 and 9).

Figure 8: Music screen

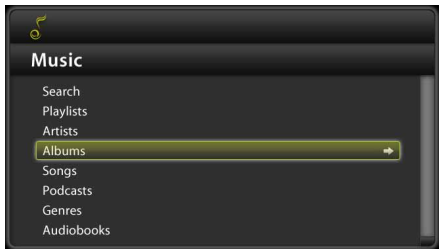
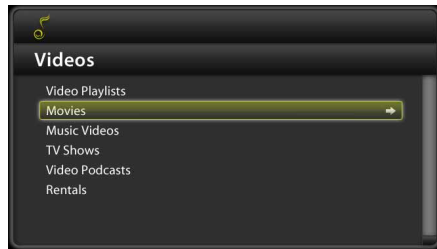
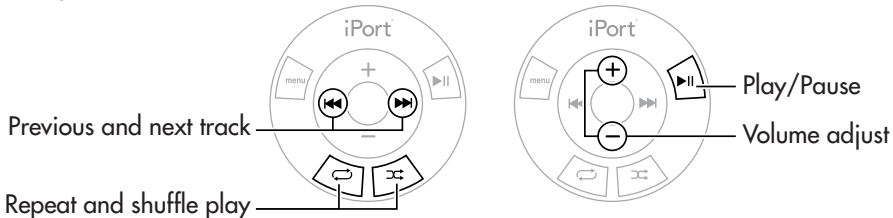


Figure 9: VIDEO screen



3. Press + and – on your iPort or Apple remote to highlight your choices, then press SELECT to make your selections (just as you would use the iPod's scroll wheel and center button).

Figure 10: PLAYBACK CONTROLS



When music plays, the Now Playing screen displays the track information, album art (if any), and playback status.

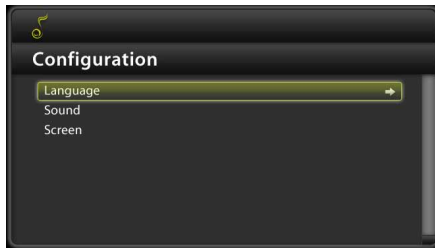
Figure 11: NOW PLAYING SCREEN



## Configuring the iPort

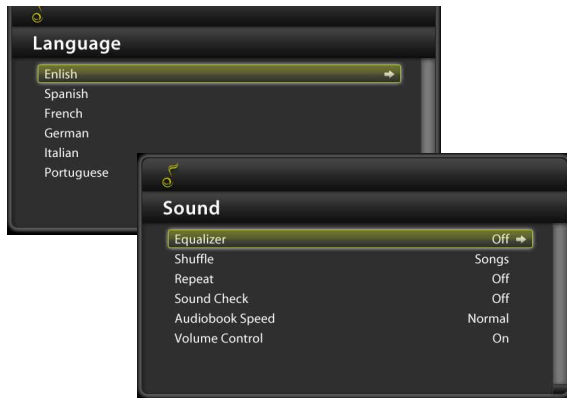
1. From the Main Menu, select CONFIGURE. The CONFIGURATION menu (Figure 12) appears, where you can select the submenu you want to adjust.

Figure 12: CONFIGURATION MENU

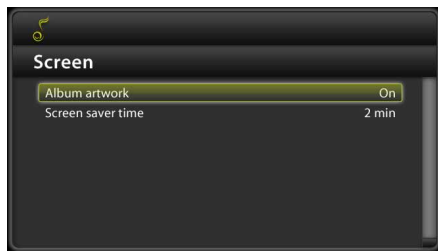


- LANGUAGE: You can select the language of the iPort's menus.
- SOUND: You can set the iPod equalizer setting, shuffle mode, repeat setting, sound check, audiobook speed, and volume control.

**Note:** When Volume Control is set to OFF, you can't adjust the volume using the iPort remote, and the volume indicator is not displayed in the Now Playing screen.



- **SCREEN:** Here you can toggle the album artwork on or off and set the screen saver duration (down to 30 seconds). The screen saver's default image, which appears on the screen after the specified time of no remote control activity, is the album artwork for the current music track or, if no album artwork is available, the iPort logo (📶). Press the center button on the remote control to change the minutes.



## IR Control Notes

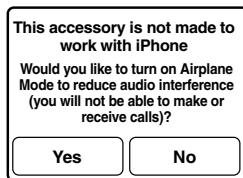
Visit [www.iportmusic.com](http://www.iportmusic.com) for the most up-to-date remote control codes.

## iPhone Control Notes

You can play music and video content stored in an iPhone® through the iPort system just as you would play content stored in an iPod. Although you can still use the iPhone's telephone functions while it is docked in the iPort, they do not function through the iPort itself.

1. Dock the iPhone into the iPort dock. The iPhone screen displays the message shown in Figure 13.
2. If you touch No, the iPhone works normally, and can receive calls while docked.
3. If you touch Yes, the iPhone will not receive calls while docked but plays music and video content.

Figure 13: MESSAGE DISPLAYED WHEN DOCKING AN IPHONE INTO AN IPOR



# iPortNetSync Software

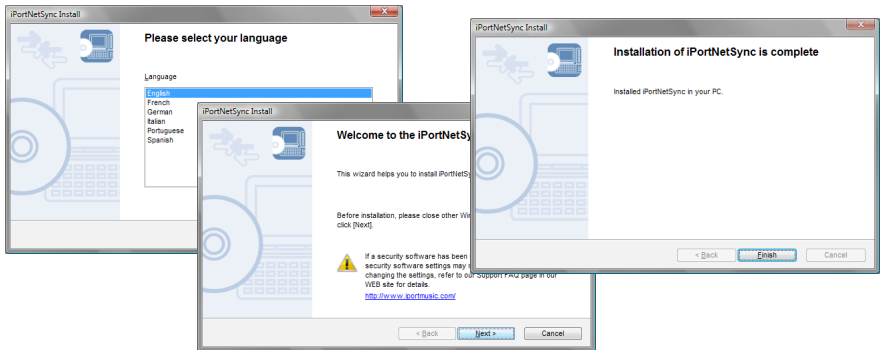
iPortNetSync lets you sync your iPod or iPod touch with iTunes on your computer network.

Requirements for synchronization:

- iTunes installed on the computer you are synchronizing with the iPod
- Windows XP (32-bit) or higher, MAC OS X v10.4.x (PPC version) or higher, or MAC OS X v10.4.4 (Intel version) or higher
- 10/100 Ethernet network connection between the iPort and the computer

## Installing and Setting Up the Software

1. Download the iPortNetSync software from [iportmusic.com](http://iportmusic.com).
2. Double-click the file to unzip it, then double-click the file COSETUP.EXE.
3. Follow the on-screen instructions to install the iPortNetSync software onto your computer until it's complete.

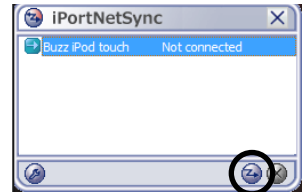


## Syncing with iTunes

1. If the iPort is not connected to your network or a computer, connect it now using an Ethernet cable.
2. On one of your networked computers, click **START, ALL PROGRAMS, IPORTNETSYNC, IPORTNETSYNC**.


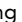
Or,  
To run iPortNetSync software in Mac OS X, click the iPortNetSync icon in the Finder.

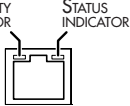
3. Click the **CONNECT** button on the iPortNetSync software or press the Sync button on the front of the iPort dock. The iPod that is docked in the iPort appears in the iPortNetSync window.
4. If your Windows computer prompts you to install a driver, follow the prompts to install the recommended driver.
5. Click the iPod you want to sync with iTunes, then click the **CONNECT** button. After about 30 seconds, iTunes open and the docked iPod appears in the iTunes **DEVICES** list.
6. Add or remove content to your docked iPod just as if it were directly connected to your computer.
7. You can disconnect the iPort from your network, although it is not necessary to do so.
8. You can remove the iPod from the iPort when you are finished syncing.



## In Case of Difficulty

If your iPort does not seem to be working properly, please read the following section before calling our Technical Assistance department or returning the iPort to your dealer. You may be able to correct the problem yourself with a minimum of inconvenience. If, after trying all of the applicable solutions, your iPort still seems to not be working properly, call your dealer or follow the directions on page 18.

Component	Problem	Solution
Power	iPort status indicator is not lit when an iPod is docked into an iPort.	<ol style="list-style-type: none"><li>1. Ensure that the power supply is plugged into an AC power outlet and that the DC plug is securely plugged into the power connector on the iPort dock.</li><li>2. Ensure that the iPod is fully seated into the iPort.</li></ol>
Status indicator	iPort status indicator turns off immediately after docking an iPod.	<ol style="list-style-type: none"><li>1. Check to see if the iPod is starting up (the Apple logo appears on the iPod display). The status indicator illuminates when the iPod has completed startup.</li></ol>
Video	No video is displayed on the TV, although the iPod shows it's playing video.	<ol style="list-style-type: none"><li>1. Ensure that the video output connection from the iPort dock to the TV is secure.</li><li>2. Ensure that the iPod is fully docked into the iPort.</li><li>3. The iPort may be in an incompatible video mode. Undock the iPod, then press and hold  or  for five seconds to change between NTSC and PAL video formats. You can also change the TV's video format instead (refer to its user manual for instructions).</li><li>4. Check the iPod video out setting. The iPort does not support iPod 5G video.</li></ol>

Component	Problem	Solution
Audio	No audio is produced, although the iPod shows it's playing.	<ol style="list-style-type: none"> <li>1. Ensure that the audio output connections from the iPort to the TV or AV receiver are securely connected.</li> <li>2. Ensure that the iPod is fully seated into the iPort.</li> </ol>
iPortNetSync	The computer cannot successfully synchronize with the docked iPod.	<ol style="list-style-type: none"> <li>1. On Windows computers, make sure that the Windows Firewall is either turned off or that iPortNetSync is in the EXCEPTIONS list.</li> <li>2. For more networking FAQs, go to: <a href="http://www.iportmusic.com/support/free-standing">www.iportmusic.com/support/free-standing</a>.</li> </ol>
Network	The network does not detect the iPort or iPod docked in the iPort dock	<ol style="list-style-type: none"> <li>1. Examine the LED indicators on the Ethernet port on the back of your iPort to troubleshoot the network connection.</li> </ol> <div style="text-align: center;">  </div> <ul style="list-style-type: none"> <li>• <b>Link/Activity indicator green:</b> Network cable is connected and linked with network hub or switch.</li> <li>• <b>Status indicator:</b> Blinks during network activity.</li> </ul>

## Cleaning Your iPort

Clean the iPort only with a damp cloth. Do not use any cleaners, chemicals, or solvents. Be careful with the docking connector so that it does not get wet or damaged.

## Specifications

Power supply output:	12V DC, 1 Amp
Power supply input:	110~240 VAC 50~60Hz, 0.45 Amps
Video output:	Component video
Audio output:	L/R analog audio
IR remote:	Remote IR control port
Network:	Ethernet 10Base-T/100Base-TX network RJ-45 connector

## Technical Assistance and Service (inside the U.S. only)

**If you any have questions about the operation or installation of this product, please call our Technical Assistance Department at (800) 582-0772 or (949) 492-7777; from 7 a.m. to 5 p.m., Pacific Time, Monday – Friday.**

If your iPort should need repair or service, contact your iPort Authorized Dealer for help, or use the following procedure:

1. Prior to calling, note the product's model number, serial number (visible on the bottom of the iPort), purchase date, and the name and address of the dealer where you purchased the product.
2. Contact our Technical Assistance Department at the above number(s) and describe the problem the unit is experiencing. If applicable, they will issue a Return Authorization Number.

**IMPORTANT: YOU MUST HAVE PRIOR AUTHORIZATION TO RETURN YOUR iPORT!**

3. If you're directed to return the unit to iPort for repair, pack the unit in its original shipping carton. If needed, you can obtain replacement packaging from us for a small charge. Note: it is best if you place the box into an additional outer "overcarton" before shipment to minimize a chance of theft in shipment. Please include a copy of the original bill of sale inside the package.
4. Contact a package delivery service such as United Parcel Service or Federal Express to arrange prepaid (not collect) shipping. Do not use the U.S. Postal Service.

**IMPORTANT: FREIGHT COLLECT SHIPMENTS WILL BE REFUSED.**

5. WRITE THE RETURN AUTHORIZATION NUMBER ON THE OUTSIDE OF THE SHIPPING CARTON.
6. Ship the packaged unit to:

QUALITY ASSURANCE DEPARTMENT  
iPORT  
212 AVENIDA FABRICANTE  
SAN CLEMENTE, CA 92672-7531

## Technical Assistance and Service (Outside the U.S.)

Please contact your local authorized dealer for technical assistance and service information.

## Warranty Coverage (U.S. Only)

iPort provides the following coverage for units that fail under normal use and according to these instructions due to a defect in workmanship or materials: iPort will, at its option and at no charge, repair or replace the components of such unit that prove to be defective for a period of one year from the date of purchase.

For this warranty to be effective, the bill of sale must show that the unit was purchased from an "Authorized iPort Dealer" and must list the price paid. This warranty shall apply exclusively to the original purchaser.

Furthermore, this warranty shall not apply if:

- 1 Damage to the unit was caused by accident, abuse, or misuse;
- 2 The unit was opened, modified, or repaired by unauthorized personnel; or
- 3 The unit was not used as outlined in the operating instructions.

## Exclusions and limitations

The warranty set forth above is in lieu of all other warranties, express or implied, of merchantability, fitness for a particular purpose, or otherwise. The warranty is limited to iPort products registered herein and specifically excludes any damage to loudspeakers and other allied or associated equipment which may result for any reason from use with this product. iPort shall, in no event, be liable for incidental or consequential damages arising from any breach of this warranty or otherwise. This warranty gives you specific legal rights, and you may have other rights which vary from state to state.

## Warranty Coverage (All Other Countries)

Please contact your local authorized dealer for warranty information.

## Copyright and Trademark Notices

©2009 Dana Innovations. All rights reserved. iPort is a registered trademark of Dana Innovations. Apple, iPod, iTunes, iPod touch, and iPhone are registered trademarks of Apple, Inc. All other trademarks are property of their respective owners. "Made for iPod" means that an electronic accessory has been designed to connect specifically to iPod and has been certified by the developer to meet Apple performance standards.

## Disclaimer

Due to continuous product improvement, all specifications are subject to change without notice. Apple is not responsible for the operation of this device or its compliance with safety and regulatory standards.

## For More Information

For the latest iPort product information, go to [www.iportmusic.com](http://www.iportmusic.com).

 iPort<sup>®</sup>



san clemente ca | 888-45-iPort | [www.iportmusic.com](http://www.iportmusic.com)

33-5171

121609aFinal

ZDA001U